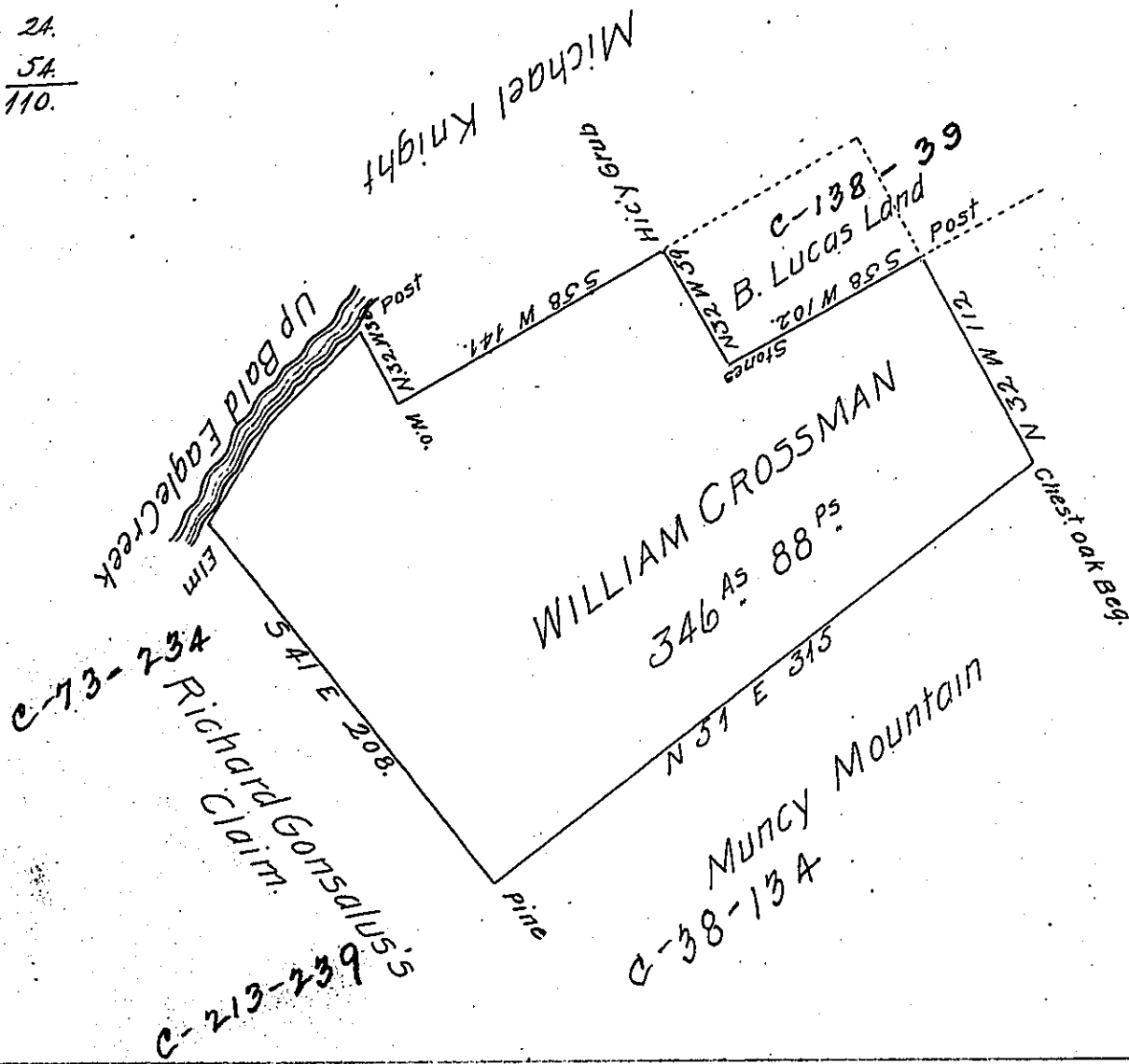


Courses & distances up Bald Eagle Creek

S. 42 W. 32.
 S. 46 W. 24.
 S. 30 W. $\frac{5A}{110}$.



Note the dotted lines show how far the Survey formerly interfered with B. Lucas's Survey

The Draught of a tract of Land Situate, in Howard, (formerly Centre) Township, Centre County, Containing three hundred and forty six Acres, Eighty eight perches and Allowance of Six per Cent for Roads &c^a Surveyed the 7th of February 1809 by virtue of a warrant granted to William Crossman dated the 13th day of May 1793. And resurveyed the 5th day of January 1813 in pursuance of an Order of the Board of property dated the 21st day of December 1811.

To Andrew Porter Esquire
 Surveyor General of Pennsylvania

W^m Kerr D.S.

IN TESTIMONY that the above is a copy of the original remaining on file in the Department of Internal Affairs of Pennsylvania, made conformably to an Act of Assembly approved the 16th day of February, 1833, I have hereunto set my Hand and caused the Seal of said Department to be affixed at Harrisburg, this ninth day of May 1904.

Isaac R. Brown
 Secretary of Internal Affairs.